

US+PhysioMED

STOP URINE LEAK SUL

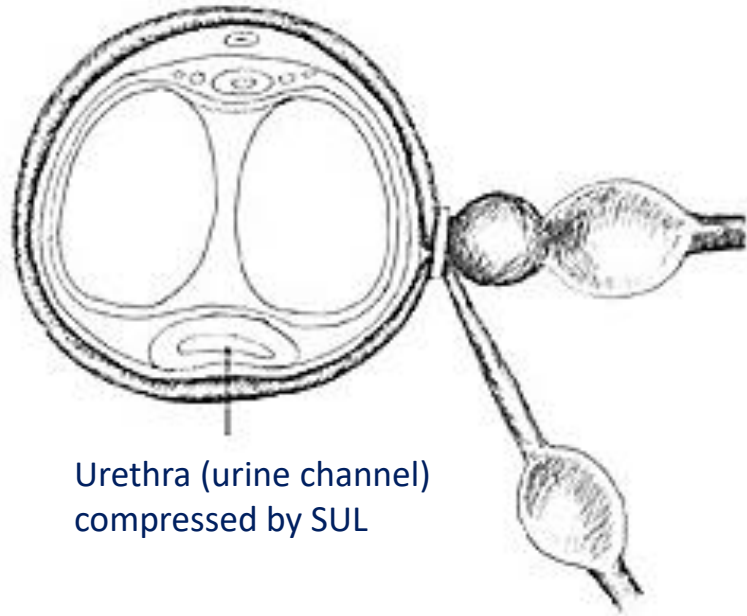
WWW.USPHYSIOMED.COM

949.769.6751

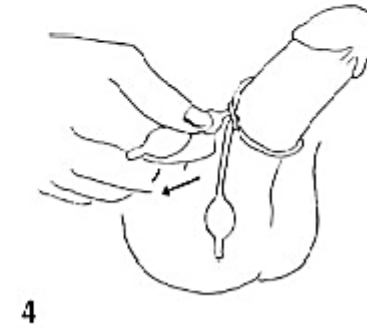
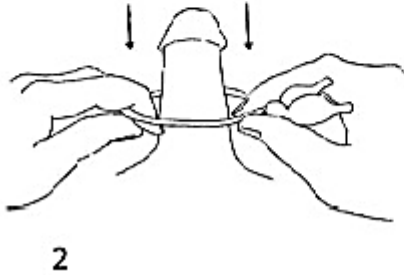
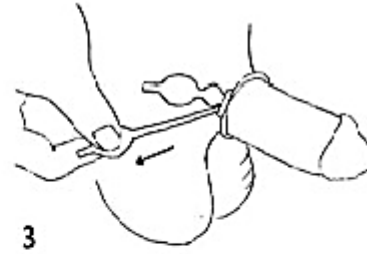
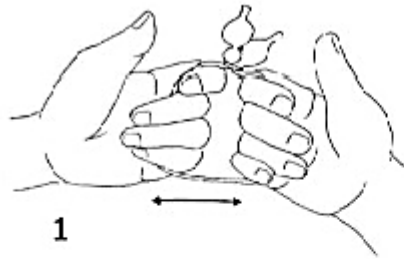
Cross-sectional anatomy of the penis with and without SUL in place.



Urethra (urine channel)



Urethra (urine channel)
compressed by SUL



CARE AND REPLACEMENT

- 1.- Use only with water based lubricants. Oil based lubricants may degrade the device.
- 2.- Clean after use with warm water and ordinary hand soap.
- 3.- Keep SUL dry between uses.
- 4.- Replace SUL after 6 months of use or when it shows signs of wear such as cracking.